

You rely on genuine
Kubota performance

DEMAND GENUINE KUBOTA



In any application, demand Genuine KUBOTA Parts, **Remanufactured** to last, from the people that supplied the original.

- Built to KUBOTA's quality standards
- Competes with aftermarket offerings
- Leaves a smaller footprint
- Maximizes uptime

CONTACT YOUR KUBOTA ENGINE AMERICA DISTRIBUTOR

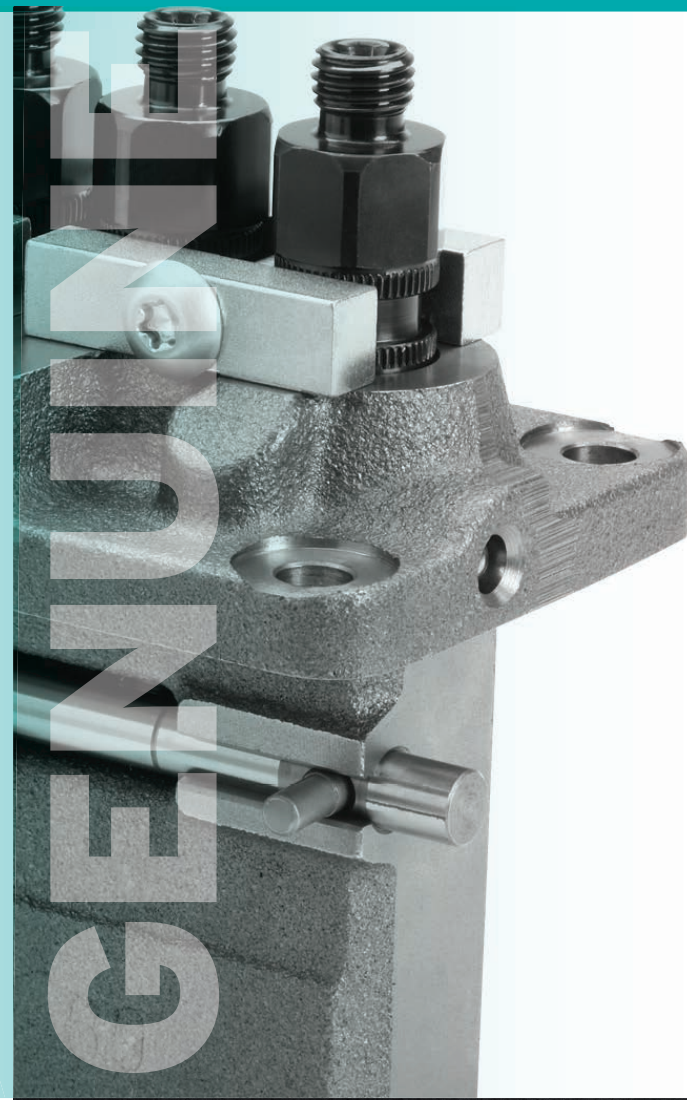
Find the remanufactured parts you need, along with authorized support and service for your Kubota engine. KubotaEngine.com/Parts/genuine-remanufactured-parts

If you need help finding your local distributor, visit KubotaEngine.com/US-Engine



KUBOTA Reman

Exclusively for
Kubota Industrial Engines



Genuine Parts • Genuine Products • Genuine Service

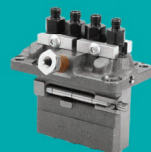
Kubota Engine America Corporation
505 Schelter Road, Lincolnshire, IL 60069
P: (847)955-2500 F: (847)955-2699
kubotaengine.com



ALTERNATORS



STARTERS



INJECTOR PUMPS



TURBO CHARGERS



INJECTORS

RESPONSIBLY REMANUFACTURED

1. Now you have another option from Kubota! Purchase either New or Remanufactured.
2. Kubota remanufactured parts have the same great quality as a New Kubota part.
3. Kubota Reman is available for alternators, starters, injector pumps, turbo chargers and injectors.
4. Each remanufactured part comes with a 1-year remanufactured parts warranty.*

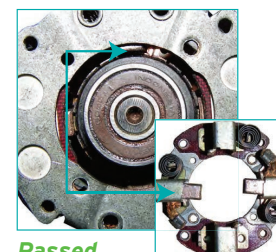
*Refer to Limited Warranty on remanufactured parts statement for details.

Test Starter #1

After completing 22,497 starts the brush material remains in contact with the starter armature. This **remanufactured** starter still has several starts before brush failure.

The wrong brush material composition resulted in short **aftermarket** starter life due to excessive brush wear resulting in loss of brush contact to the armature.

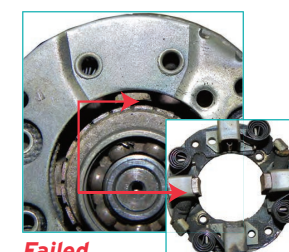
Kubota Reman



Passed
with 22,497 starts

VS

Aftermarket

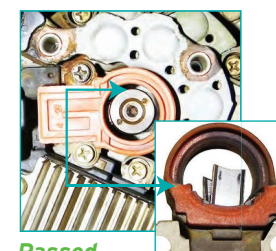


Failed
after 3,593 starts

Test Alternator #1

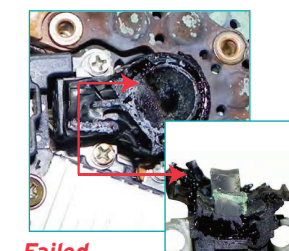
After 251 hours of testing the **remanufactured** unit shows no signs of overheating. Brush holder, seal and brushes are in good condition.

Inferior plastic used in the brushholder of the **aftermarket** part resulted in failure due to melting under high heat situations.



Passed
with 251 hours

VS

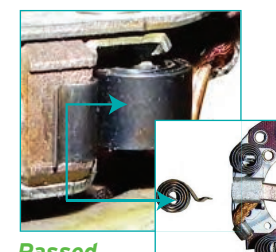


Failed
after 44 hours

Test Starter #2

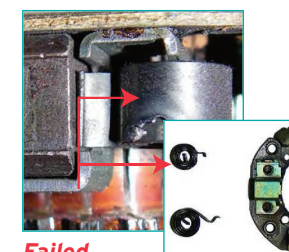
Remanufactured starters are assembled with the correct brush springs and the springs are in the correct position on the brushes.

Aftermarket manufacturer use of the wrong brush spring and poor assembly techniques resulted failure due to the brush spring not seated on the brush in the correct position.



Passed
with 20,863 starts

VS



Failed
after 176 starts

NO CORE HASSLE

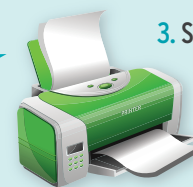
Core ships directly to KUBOTA!*

*More details at kubotaengine.com/parts.
Shipping not available in some areas.

1. BOX



2. PRINT



3. SHIP

